



GPM APOLLO

DP2 IMR/SUBSEA VESSEL, 1000m² Deck, ABS



Overview / Introduction

GPM Apollo is an ABS-class IMR vessel (built 2014, Singapore flag), upgraded with a 160T lattice-boom crane (100-150t AHC Knuckle Boom Crane Optional), helideck and a gangway (optional). POB expanded from 90 to 202. Equipped with Kongsberg DP-2 (K-Pos DP-21 with cJoy), ~1,000 m² clear deck (7.5 t/m²), FiFi 1, oil recovery systems, and full hospital, the vessel delivers IMR and walk-to-work capabilities.

General Specifications

Specification	Details
Length Overall	86.00 m
Length BP	75.60 m
Breadth	20.00 m
Depth	9.00 m
Draft (Max)	7.30 m
Deadweight (DWT)	4,900 T @ max draft
GT / NT	4,768 / 1,430
Deck Area	1,000 m ² (7.5 t/m ² strength)
Classification	ABS ⌘A1, Offshore Support VSL, DPS-2, Oil Recovery, SPS Code. ABS Class notation: ⌘A1, Offshore Support VSL, AMS, ACCU, DPS-2, ENVIRO, GP, BWT, FiFi VSL Class 1, Oil Recovery Capability, Supply, SPS Code, UWILD. Dynamic Positioning: Kongsberg K-Pos DP-21 with cJoy joystick.
Flag / IMO	Singapore / IMO 9647045

Deck Equipment & Construction Capability

Equipment	Specification
Deck Crane	160T Lattice Boom Crane or 100-150T AHC Knuckle Boom Crane
Aux Crane	1 × Hydraulic 2t SWL @ 12 m Radius (Knuckle Boom)
Anchor Windlass	2 x Electro-Hydraulic c/w Hawser drum & Warping Head
Anchor & Chain	2 x HHP Anchor 3,060kg coupled to 440M x 50mm (U3) Stud Link Chain
Windlass Mooring Drum	2 off for 220m x 64mm PP Rope (18t @0~10m/min)
Mooring Lines	4x180M length each of 3it breaking strength
Tugged Winch	2 x Hydraulic driven 10t x 15m/min
Capstan	2 x Hydraulic driven Vertical mount 10t x 15m/min with Mooring Drum combination
Gangway	TBD

Tank Capacities

Cargo Type	Capacity (m ³)
Deck Strenght	7.5/m2
Clear Deck Area	Abt. 1000 m2
Fuel Oil	Abt. 1,700 m ³
Fresh Water	Abt. 1,700 m ³
Drill Water / Ballast	Abt. 1,700 m ³
Brine	Abt. 700 m ³
Base Oil	Abt. 200 m ³
Recovered oil	Abt. 900 m ³
Dry Bulk	Abt. 400 m ³
Methanol	Abt. 200 m ³

Accommodation & Facilities

Capacity	202 men
Facilities	Full A/C, mess rooms, control rooms, offices, conference room, recreation room, gym.
Hospital	2 berth hospital.

Propulsion & DP

System	Detail
DP Systems Class 2	Kongsberg K-Pos DP-21 with cJoy Independent Joystick System.
DP Sensors & Position Reference	3 x Gill Wind Sensors, 2 x MRU (MRU2 & 5), 1 x HiPAP 501, 1x DPS122, 1 x DPS112, 1x Inmarsat B/Fleet 77 demodulator, 1 x Radius 1000Q c/w Transponder 700, 1x CyScan Mk4.0, 1 x Tautwire Mk 15/500

Performance & Consumption

Maximum speed	14 knots
Service speed	12.5 knots
Fuel Consumption - Full speed	Abt. 21.6 Tonne MDO/day
Fuel Consumption - Service Speed	Abt. 21.4 Tonne MDO/day
Fuel Consumption - In DP mode	Abt. 15.0 Tonne MDO/day
Fuel Consumption - In Port or at Anchores	Abt. 1.40 Tonne MDO/day

Machinery

Main Generator	4 x Wartsila 6L.26 - 1,870kW 690V/60Hz, 900 RPM
Power Drive - Main Propulsion	2 x Wartsila 2,200kW Electric Steerable Thrusters
Bow Thruster - Retractable	1 x Wartsila 900KW Electric Drive
Bow Thruster - Tunnel	1x Wartsila 995kW Electric Drive
Harbour Generator	1 x 450kW"Cummins" or equivalent
Emergency Generator	1x 150kW"Cummins" or equivalent

Radio & Navegation Equipment

Gyro Compass	3 Master x Tokimec - TG - 8000 or equivalent
Auto Pilot	Anschutz Pilot Star -D or equivalent
GPS	Furuno DGP - 150 Navigator or equivalent
Echo Sounder & Speed	Furuno FE -700 or equivalent
Radar	Furuno - FR- 2117 & FR21375 or equivalent
GMDSS Sea Area 3	Furuno RC - 1800T or equivalent
Public Addressor	Vingtor CTB/SBA Talkback & PA system
Telephone	Vingtor ACM-AlphaCom Marine Integrated Telephone / Command System or equivalent
BNWAS	PANASIA Co Ltd
Gyro Compass 3 Master x Tokimec - TG-8000 or equivalent	Gyro Compass 3 Master x Tokimec - TG -8000 or equivalent

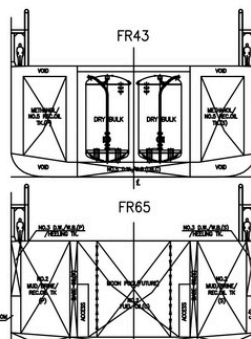
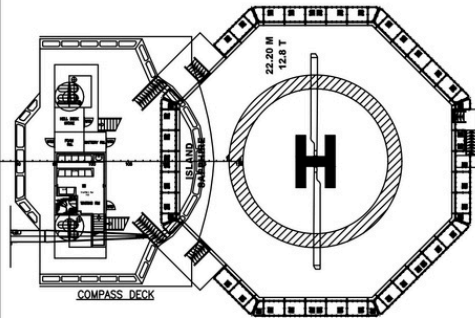
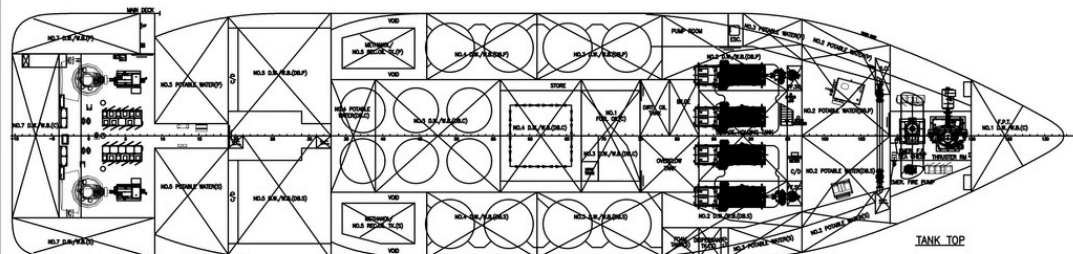
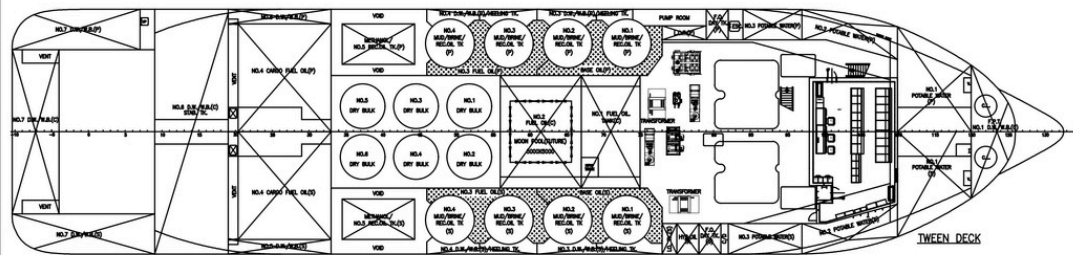
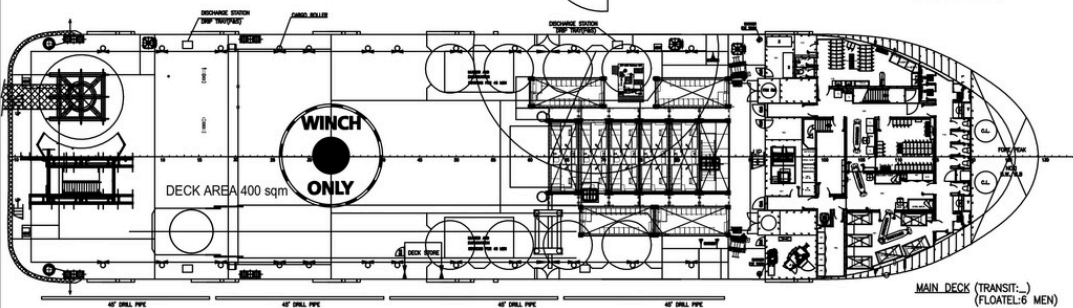
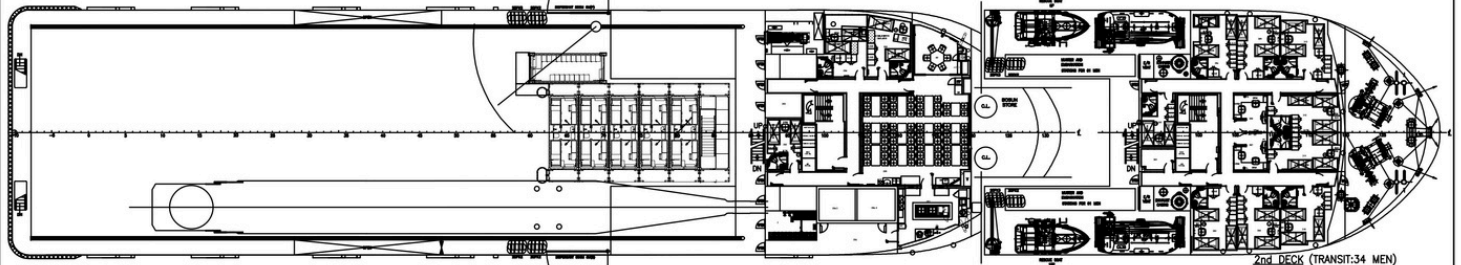
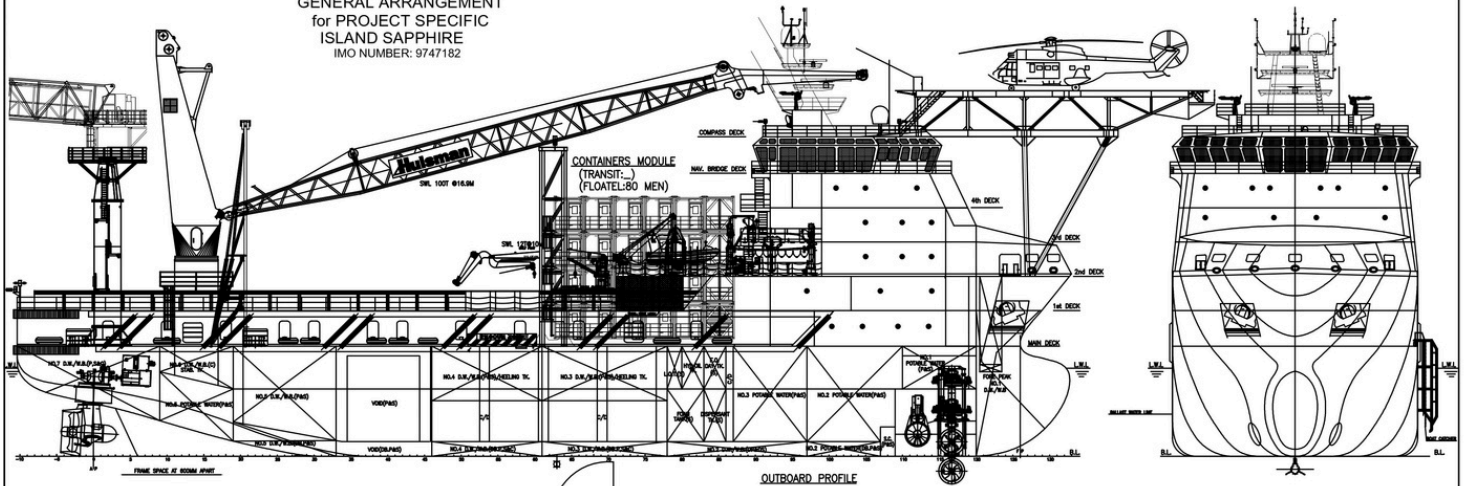
Fire fighting equipment

Firemain	Firelines with 2" bronze hydrants
Fireman outfit	6 complete fireman's outfit to SOLAS requirement
Portable Fire Extinguisher	As per SOLAS Requirement
Fixed CO2 & Flexi - fog water	To be installed in Category A Machinery space
Extinguishing System	As per SOLAS and class requirement
Emergency Fire Pump	1x70m ³ /hr @ 70m Head
External Fifi 1	2 x front PTO driven Pump @1,880m ³ /hr

Others

Dynamic Positioning System	Kongsberg - K-Pos DP-21 with c Joy Independent Joystick System
Ballast Water Treatment System	Minimum 120m ³ /hr
Oily Water Separator	1x HYN 15ppm c/w Alarm or equivalent
Sewage Treatment Plant	Sewage Treatment Plant: as per flag and international regulation requirement
Water Maker	2 x RO systems – 40m ³ /day
Helideck	MTOM 9.3 T, D-VALUE 22M

GENERAL ARRANGEMENT
for PROJECT SPECIFIC
ISLAND SAPPHIRE
IMO NUMBER: 9747162



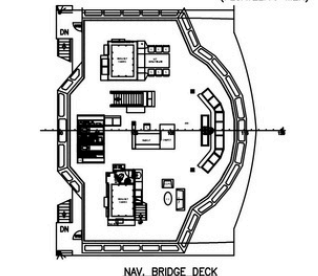
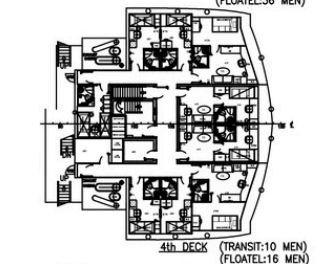
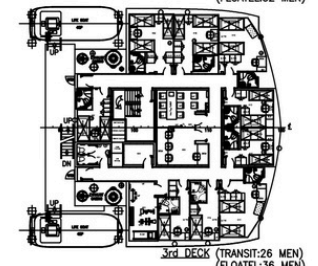
PRINCIPAL PARTICULARS & CAPACITIES

LENGTH OA	86.00 M	REC OIL	1,018 M ³
LENGTH BP	75.60 M	BASE OIL	239 M ³
BEAM MLD.	20.00 M	MUD	781.6 M ³
DEPTH MLD.	9.00 M	BRINE	761.6 M ³
DRAFT DESIGNED	7.20 M	METHANOL	256.6 M ³
DRAFT SCANTLING	7.40 M	D.W./W.B.	2,020 M ³
COMPLEMENT	202 MEN	GENSET	1,800 KW X 4
SHIP FUEL OIL	1,764 M ³	MAIN PROPELLER	2,200 KW X 2
CARGO FUEL OIL	754 M ³	TRIAL SPEED	14.0 KTS
POTABLE WATER	1,001 M ³	DK CARGO AREA	400 M ²
CEMENT TANK	416 M ³	CARGO DK LOAD	7.5 T/M ²

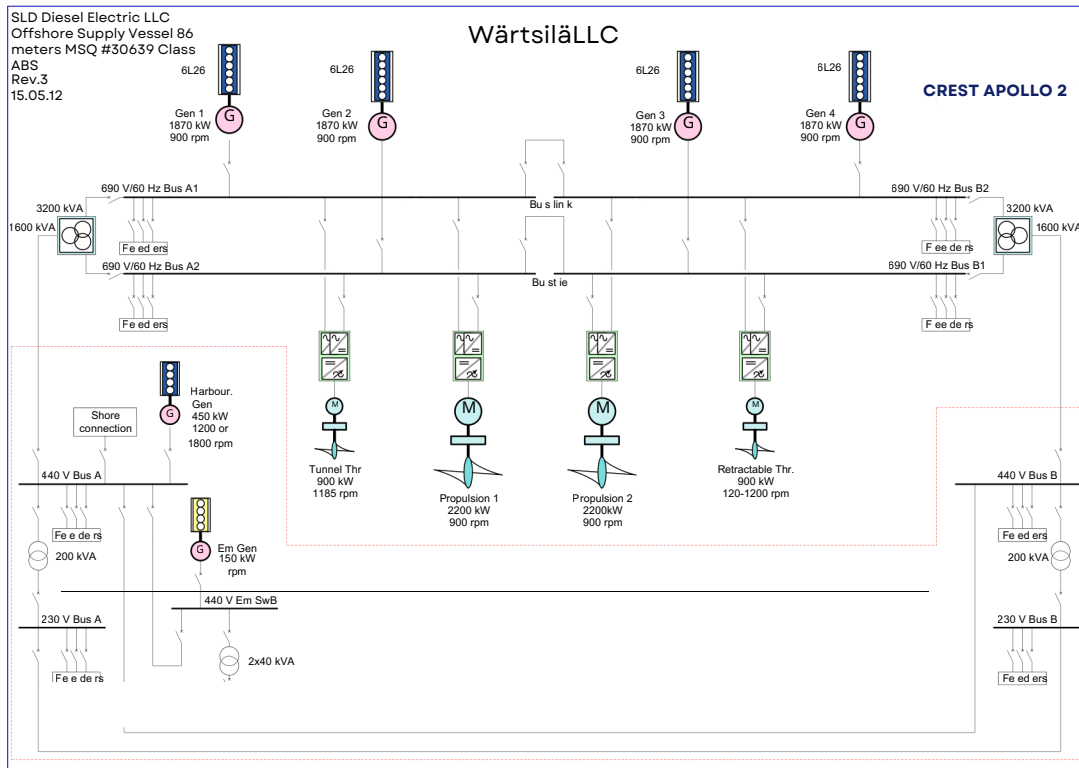
NOTE: 1. THIS DRAWING WAS DERIVED FROM YC3233-001.

CLASS: ABS @ A1, OFFSHORE SUPPORT VESSEL

OPV1,
OSP-C1,
SPS,
SSR OR C 10/C,
AMS,
ACCU,
SPS-2,
RW,
UWLD



AT	REVISED AS PER YARD/CLIENT FEEDBACK	Z/A	16.05.2025
AD	ISSUED FOR CLASS SURVEILLANCE	Z/A	WHD 06.05.2025
REV	MODIFICATION	BY	CHK'D DATE
PROJECT	86M DIESEL ELECTRIC PLATFORM SUPPLY / OIL RECOVERY SAFETY STANDBY VESSEL "ISLAND SAPPHIRE"		
TITLE	GENERAL ARRANGEMENT		
DRG NO:	P8349-101-02-A1	SCALE:	NTS SIZE-A1
DATE:	07.05.25	DRAWN BY:	Z/A
		CHECKED BY:	WHD
THIS DOCUMENT AND THE INFORMATION IT CONTAINS IS COPYRIGHT AND REMAINS THE PROPERTY OF SEARCH SOLUTIONS INT'L PTE LTD. IT IS NOT TO BE COPIED IN WHOLE OR IN PART OR DISCLOSED TO ANY THIRD PARTY FOR ANY PURPOSE WHATSOEVER WITHOUT PRIOR WRITTEN CONSENT.			
OWNER	MVA INVESTMENTS LIMITED		
BUILDER	GUANGDONG YUEXIN OCEAN ENGINEERING CO. LTD		
DESIGNER	SeaTech Solutions International (S) Pte Ltd		
PROJECT NO:	P8349	HULL NO:	YK3233



Case 1 CREST APOLLO 1

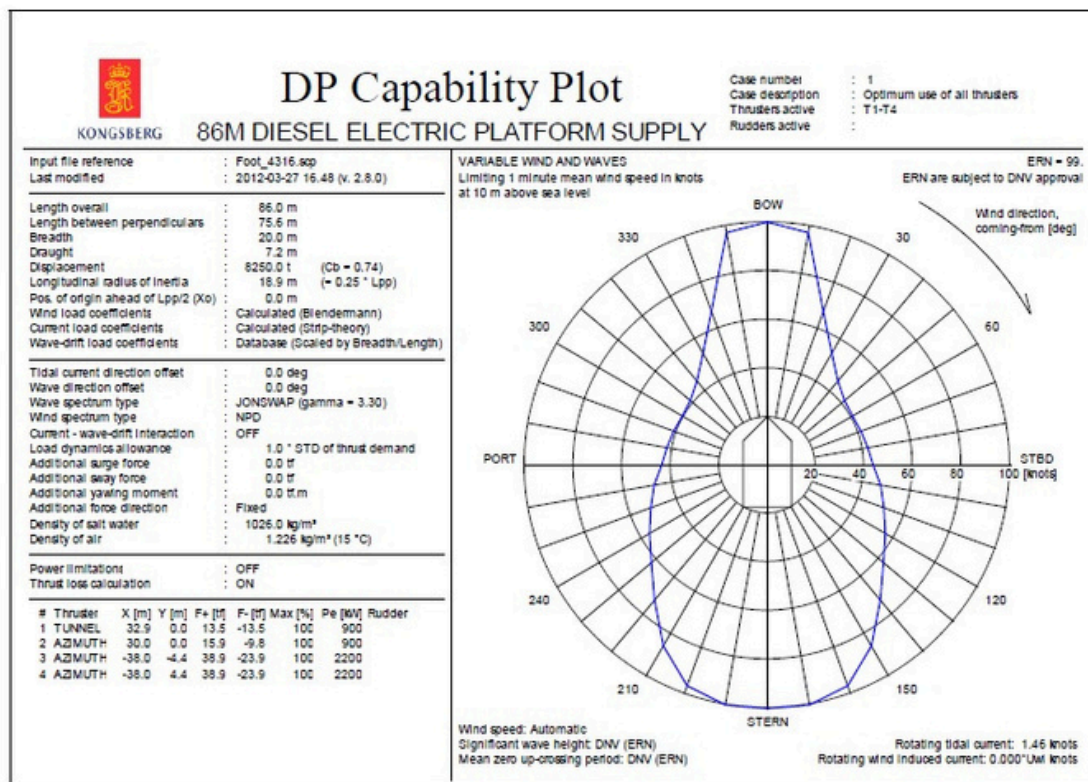


Figure 10: DP capability envelope for case 1.

Particulars are believed to be correct but not guaranteed.

Owners reserve the right to amend the specifications without notification