

APOLLO

INSPECTION MAINTENANCE AND REPAIR VESSEL



PRINCIPAL PARTICULARS

Year Delivered Tonnage (69) Class	2014
Notation	GRT - 4897~ / NRT - 1469~ ABS A1 (E) OFFSHORE SUPPORT VSL, AMS, ACCU, DPS-2, ENVIRO, GP, BWT, FiFi VSL CLASS 1, OIL RECOVERY CAPABILITY, SUPPLY, SPS CODE, UWILD
Flag	Singapore 399021
Official Number Call Sign	9V2442
IMO Number	9647045
Length Overall	86.00m
Length BP	75.60m
Breadth Moulded	20.00m
Depth Moulded	9.00m
Draft (Summer Loadline)	7.30m
Draft Scantling	7.40m
Deadweight	Abt. 4,900T @ max. Draft

SAFEEN APOLLO

INSPECTION MAINTENANCE AND REPAIR VESSEL



PERFORMANCE		DISCHARGE RATES	
Maximum Speed	Abt. 14.5 Knots @ 100% MCR @Ballast Condition	Potable Water / Drill Water	2 x 150M3/hr at 90m head
Service Speed	Abt. 12.5 Knots @ 90% MCR	Fuel Oil	2 x 150M3/hr at 90m head
Fuel Consumption - Full Speed	Abt. 21.6 Tonne MDO/day Tonne	Mud / Brine / Rec. Oil	2 x 75M3/hr @20Bar (SG2.5) / 100M3/hr @5bar
Fuel Consumption - Service Speed	Abt. 12.4 Tonne MDO/day	Base Oil	1 x 150M3/hr at 90m head
Fuel Consumption - In DP mode	Abt. 15.0 Tonne MDO/day	Dry Bulk	50M3/Hr @ 5 Bar
Fuel Consumption - In Port or at Anchors	Abt. 1.40 Tonne MDO/day	MACHINERY	
CAPACITIES		Main Generator	4 x Wartsila 6L26 - 1,870kW 690V/60Hz, 900 RPM
Deck Strength	7.5 T/m ²	Power Drive - Main Propulsion	2 x Wartsila 2,200kW Electric Steerable Azimuth Thrusters
Clear Deck Area	Abt. 1,000 m2	Bow Thruster - Retractable	1 x Wartsila 900kW Electric Drive
Potable Water	Abt. 1,700 m3	Bow Thruster - Tunnel	1 x Wartsila 995kW Electric Drive
Fuel Oil	Abt. 1,700 m3	Harbour Generator	1 x 450kW "Cummins" or equivalent
Drill Water / Water Ballast	Abt. 1,700 m ³	Emergency Generator	1 x 150kW "Cummins" or equivalent
Dry Bulk	Abt. 400 m ³		
Mud / Brine (SG 2.5)	Abt. 700 m3		
Base Oil	Abt. 200 m3		
Recovered Oil	Abt. 900 m3		
Methanol	Abt. 200 m ³		

RADIO & NAVIGATION EQUIPMENT	
Gyro Compass	3 Master x Tokimec - TG-8000 or equivalent
Auto Pilot	Anschutz Pilot Star-D or equivalent
GPS	Furuno DGP-150 Navigator or equivalent
Echo Sounder & Speed Log	Furuno FE-700 or equivalent
Radar	Furuno - FR- 2117 & FR2137S or equivalent

SAFEEN APOLLO

INSPECTION MAINTENANCE AND REPAIR VESSEL



RADIO & NAVIGATION EQUIPMENT	
GMDSS Sea Area 3	Furuno RC-1800T or equivalent
Public Addressor	Vingtor CTB/SBA Talkback & PA system
Telephone	Vingtor ACM-AlphaCom Marine Integrated Telephone / Command System or equivalent
BNWAS	PANASIA Co Ltd
ECDIS	1 x Furuno

OTHERS	
External FiFi 1	2 x front PTO driven Pump @1,880m ³ /hr. 2 x Monitor of Water Jet & Water/foam type
Dynamic Positioning System	Kongsberg - K-Pos DP-21 with cJoy Independent Joystick System
DP Sensors & Position Reference	3 x Gill Wind Sensors, 2 x MRU (MRU2 & 5), 1 x HiPAP 501, 1 x DPS122, 1 x DPS112. 1 x Inmarsat B/Fleet 77. demodulator, 1 x Radius 1000Q c/w Transponder 700, 1 x CyScan Mk4.0, 1 x Tautwire Mk 15/500
Ballast Water Treatment System	Minimum 120m ³ /hr
Sewage Treatment Plant	1 x CKST 40Men or equivalent
Oily Water Separator	1 x HYN 15ppm c/w Alarm or equivalent
Water Maker	2 x SW-30T @40m ³ /day

DECK EQUIPMENT	
Anchor Windlass	2 x Electro-Hydraulic c/w Hawser drum & Warping Head
Anchor & Chain	2 x HHP Anchor 3,060kg coupled to 440M x 50mm (U3) Stud Link Chain
Windlass Mooring Drum	2 off for 220m x 64mm PP Rope (18t @0~10m/min)
Mooring Lines	4 x 180M length each of 31t breaking strength
Tugger winch	2 x Hydraulic driven 10t x 15m/min
Capstan	2 x Hydraulic driven Vertical mount 10t x 15m/min with Mooring Drum combination
Main Crane (LB)	160T Huisman PMC Crane SWL: 160 Tons Ref. Feasibility Study Doc. No: P01061-DOC-101-001
Helideck	Capable: Sikorsky S61N D: 22.2 m MTOM: 9.3 t
FIRE-FIGHTING EQUIPMENT	
Firemain	Firelines with 2" bronze hydrants
Fireman Outfit	6 complete fireman's outfit to SOLAS requirement (4 sets for FIFI Class 1)
Portable Fire Extinguisher	As per SOLAS Requirement
Fixed CO2 & Flexi-Fog Water	To be installed in Category A Machinery space
Extinguishing System	as per SOLAS and class requirement
Emergency Fire Pump	1 x 70m ³ /hr @ 70m Head

ACCOMMODATION

POB	202
Charterer's facilities	Full A/C in all cabins, mess rooms, control rooms & offices Conference room, recreation Room, Offices, Gym
Hospital	2 berth hospital

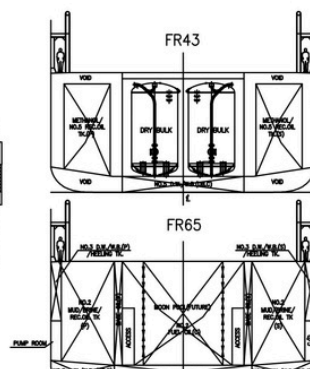
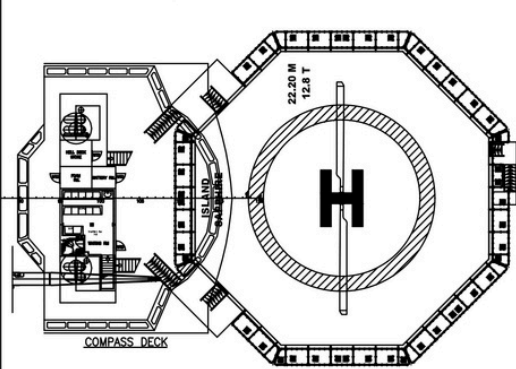
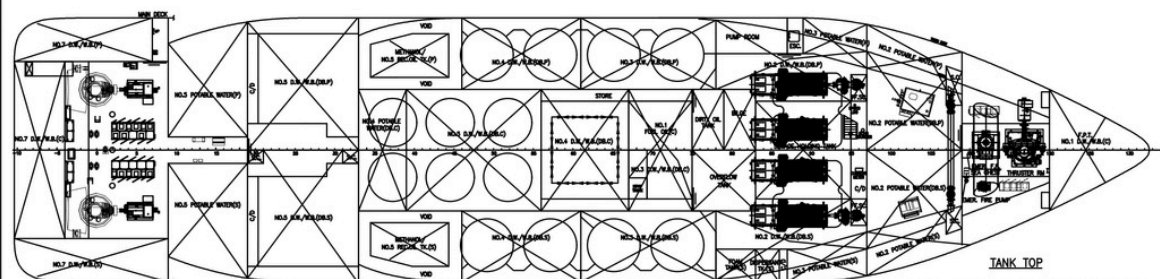
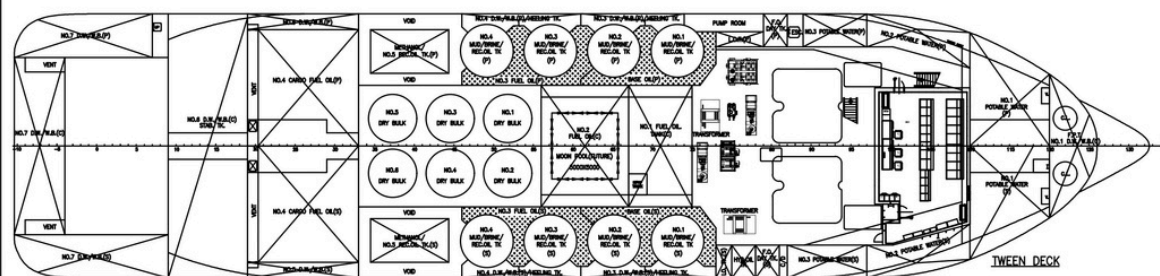
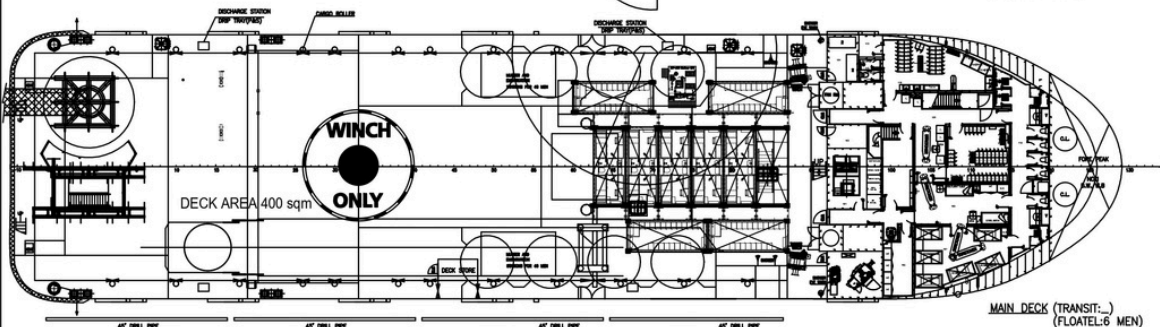
GANGWAY

Uptime 23.4 m AMC	Max wave height: up to 4.0 m Hs (vessel dependent) Max wind: 20 m/s length: 15.4 m (min) – 23.4 m (max) Lift/luff: +20° / -15° Slewing: ±180° Connection height range: 10.3 m – 26.2 m Max gangway load: 700 kg Elevator size: 1310 × 2000 mm Cargo: 2 × EUR pallets (800 × 1200 mm) Connection modes: Bumper / Landing cone
-------------------	--

GREENPARROT.SG

GENERAL ARRANGEMENT
for PROJECT SPECIFIC
ISLAND SAPPHIRE
IMO NUMBER: 9747182

100T CRANE
CONTAINERS MODULE (TRANSIT.) (FLOATEL-80 MEN)
COMPASS DECK
MAIN BRIDGE DECK
4th DECK
5th DECK
2nd DECK
1st DECK
MAIN DECK
OUTBOARD PROFILE



LENGTH OA	86.00 M	REC OIL	1,018 M ³
LENGTH BP	75.60 M	BASE OIL	239 M ³
BEAM MLD.	20.00 M	MUD	761.6 M ³
DEPTH MLD.	9.00 M	BRINE	751.6 M ³
DRAFT DESIGNED	7.20 M	METHANOL	266.6 M ³
DRAFT SANTLING	7.40 M	D.W./W.B.	2,020 M ³
COMPLEMENT	202 MEN	GENSET	1,800 KW X 2
SHIP FUEL OIL	1,764 M ³	MAIN PROPELLER	2,200 KW X 2
CARGO FUEL OIL	754 M ³	TRIAL SPEED	14.0 KTS
POTABLE WATER	1,001 M ³	DK CARGO AREA	400 M ²
CEMENT TANK	416 M ³	CARGO DK LOAD	7.5 T/M ²

CLASS: ABS ● A1, OFFSHORE SUPPORT VESSEL

CLASS: ABS ● A1, OFFSHORE SUPPLY

(FFV1,
OSR-C1,
...)SSR GR C 19) ☒

ACCU,
DPS-2,

RW,
UNWLD

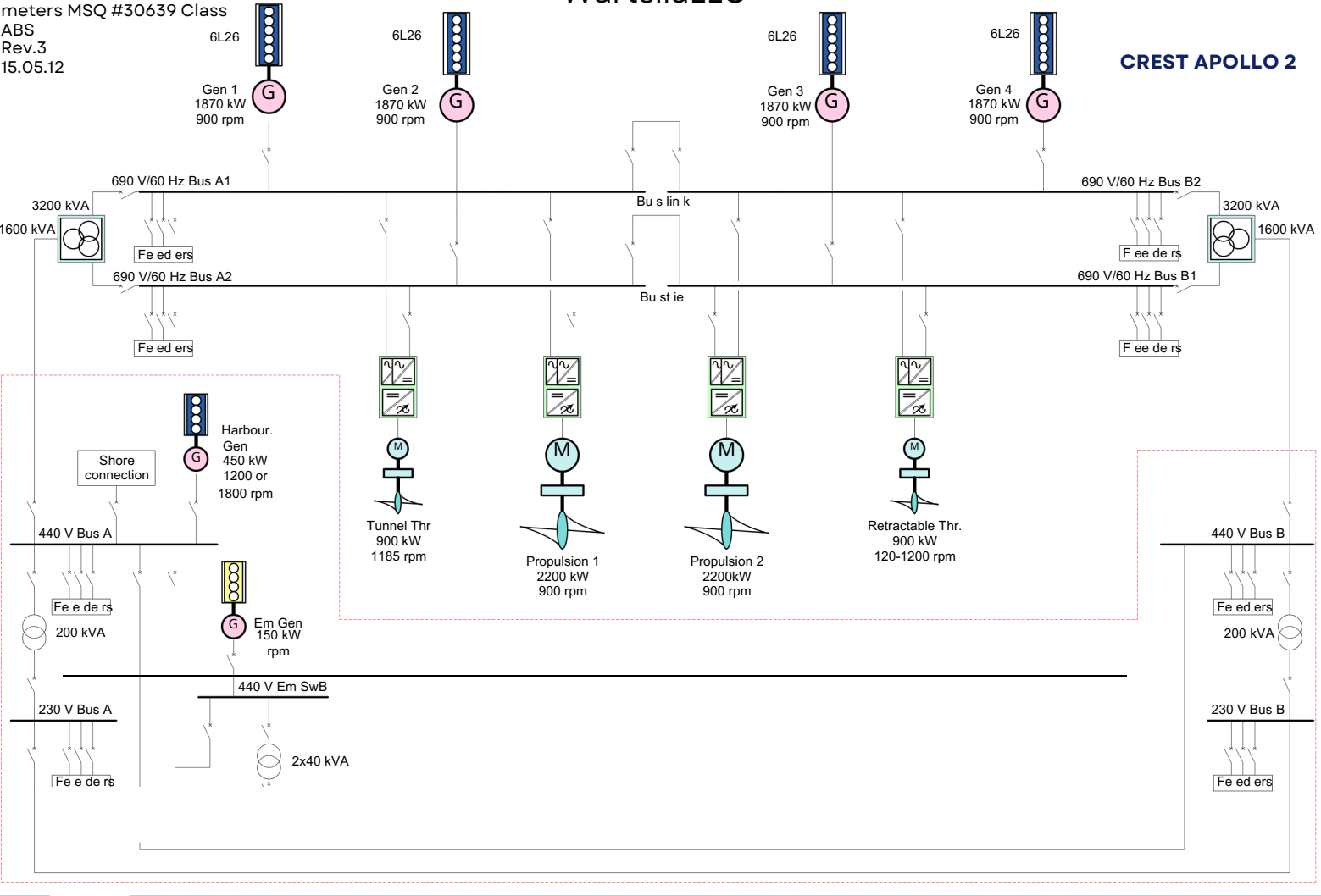
--	--	--

DATE	OWNER/	NO. OF

[illegible]

Wärtsilä LLC

CREST APOLLO 2



APOLLO

Kongsberg Maritime AS

6 RESULTS
6.1 Case 1

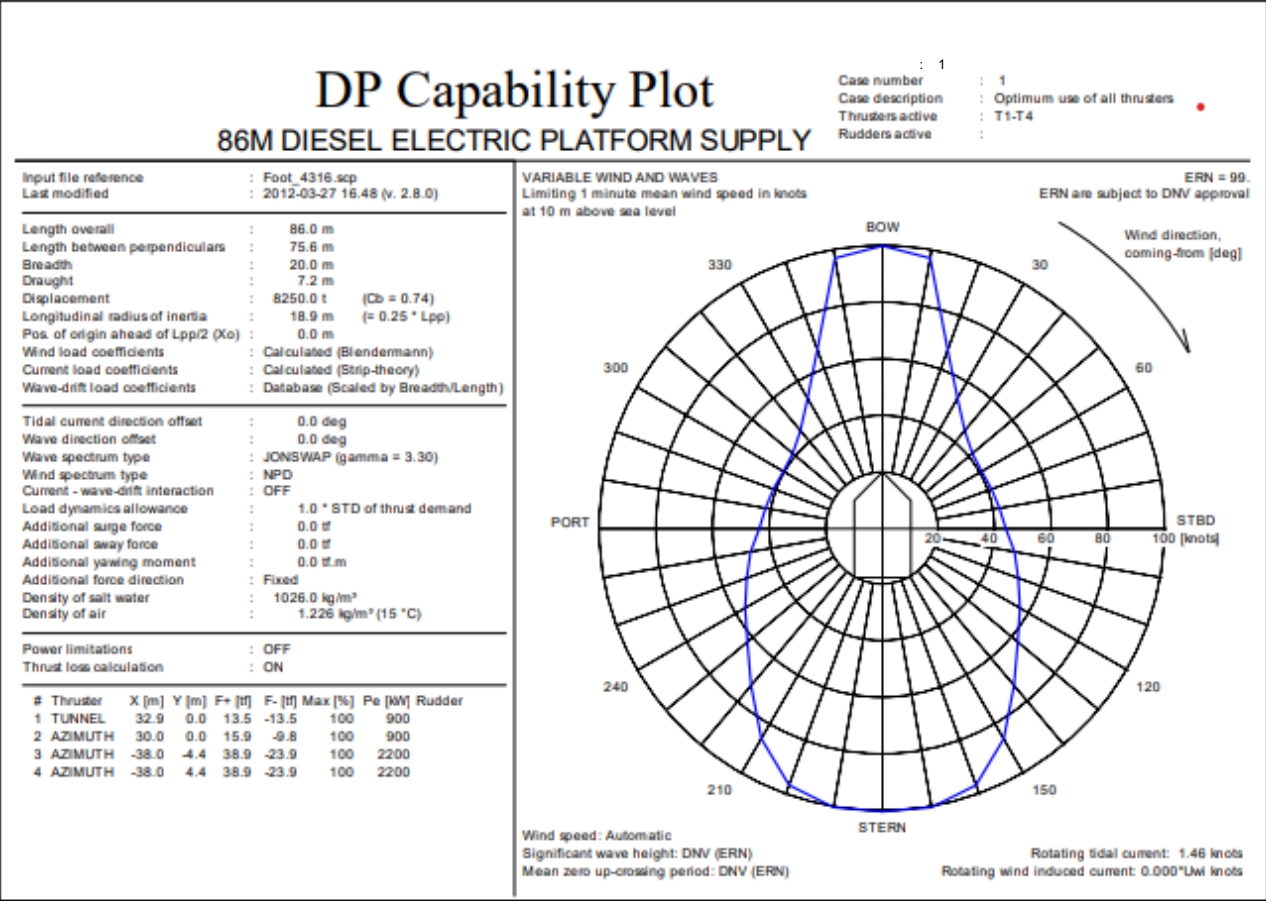


Figure 10: DP capability envelope for case 1.