



GPM VICTORIA

DP2 IMR/SUBSEA VESSEL, 1000m² Deck, ABS,
202 POB



Overview / Introduction

GPM Victoria is an ABS-class IMR vessel (built 2014, Singapore flag), upgraded with a 160T lattice-boom crane (100-150t AHC Knuckle Boom Crane Optional), helideck and a gangway (optional). POB expanded from 90 to 202. Featuring Kongsberg DP-2 (K-Pos DP-21), a ~1,000 m² clear deck (10 t/m²), FiFi 1.

General Specifications

Specification	Details
Length Overall	86.00 m
Breadth	20.00 m
Depth	9.00 m
Draft (Max)	7.40 m
Deadweight (DWT)	abt. 4,900 T @ max draft
Gross Tonnage	4,768 / 1,430
Deck Area	abt. 1,000 m ² (7.5 t/m ² strength)
Accommodation	202 men
Classification	ABS #A1 Offshore Support VSL, DPS-2, Oil Recovery, SPS Code, UWILD
Flag / IMO	Marshall Islands / IMO 9647033 / Call Sign V7A0439

Deck Equipment & Construction Capability

Equipment	Specification
Deck Crane	160T Lattice Boom Crane or 100-150T AHC Knuckle Boom Crane
Aux Crane	1 x Hydraulic 2t SWL @ 12 m Radius (Knuckle Boom)
Anchor Windlass	2 x Electro-Hydraulic c/w Hawser drum & Warping Head
Anchor & Chain	2 x HHP Anchor 3,060kg coupled to 440M x 50mm (U3) Stud Link Chain
Windlass Mooring Drum	2 off for 220m x 64mm PP Rope (18t @0~10m/min)
Mooring Lines	4 x 180M length each of 31t breaking strength
Tugger winch	2 x Hydraulic driven 10t x 15m/min
Gangway	TBD
Capstan	2 x Hydraulic driven Vertical mount 10t x 15m/min with Mooring Drum combination

Tank Capacities

Cargo Type	Capacity (m ³)
Potable Water	abt. 1,700 m ³
Base Oil	abt. 200 m ³
Recovered Oil	abt. 900 m ³
Fuel Oil	abt. 1,700 m ³
Fresh Water	abt. 1,700 m ³
Drill Water / Ballast	abt. 1,700 m ³
Brine	abt. 700 m ³
Liquid Mud	abt. 700 m ³
Dry Bulk	abt. 400 m ³
Methanol	abt. 200 m ³

Propulsion & DP

System	Detail
DP Systems Class 2	Kongsberg K-Pos DP-21 with cJoy joystick
DP Sensors & Position Reference	3 x Gill Wind Sensors, 2 x MRU (MRU2 & 5), 1 x HiPAP 501, 1 x DPS122, 1 x DPS112, 1 x Inmarsat B/Fleet 77 demodulator, 1 x Radius 1000Q c/w Transponder 700, 1 x CyScan Mk4.0, 1 x Tautwire Mk 15/500

Accommodation & Facilities

Capacity	202 men
Facilities	Fully A/C, mess rooms, control rooms, offices, conference room, recreation room, gym.
Hospital	2 berth hospital

Performance & Consumption

Maximum Speed	Abt. 14.5 Knots @ 100% MCR @Ballast Condition
Service Speed	Abt. 11 Knots @ 90% MCR
Fuel Consumption - Full Speed	Abt. 21 Tonne MDO/day
Fuel Consumption - Service Speed	Abt. 12 Tonne MDO/day
Fuel Consumption - In DP mode	Abt. 9.0 Tonne MDO/day
Fuel Consumption - In Port or at Anchors	Abt. 1.40 Tonne MDO/day
*Subject to sea state, weather condition and working perimeters	

Machinery

Main Generator	4 x Wartsila 6L26 - 1,870kW 690V/60Hz, 900 RPM
Power Drive - Main Propulsion	2 x Wartsila 2,200kW Electric Steerable Azimuth Thrusters
Bow Thruster - Retractable	1 x Wartsila 900kW Electric Drive
Bow Thruster - Tunnel	1 x Wartsila 995kW Electric Drive
Harbour Generator	1 x 450kW "Cummins" or equivalent
Emergency Generator	1 x 150kW "Cummins" or equivalent

Radio & Navigation Equipment

Gyro Compass	3 Master x Tokimec - TG-8000 or equivalent
Auto Pilot	Anschutz Pilot Star-D or equivalent
GPS	Furuno DGP-150 Navigator or equivalent
Echo Sounder & Speed Log	Furuno FE-700 or equivalent
Radar	Furuno - FR- 2117 & FR2137S or equivalent
GMDSS Sea Area 3	Furuno RC-1800T or equivalent
Public Addresser	Vingtor CTB/SBA Talkback & PA system
Telephone	Vingtor ACM- AlphaCom Marine Integrated Telephone / Command System or equivalent
BNWAS	PANASIA Co Ltd
ECDIS	1 x Furuno

Fire-Fighting equipment

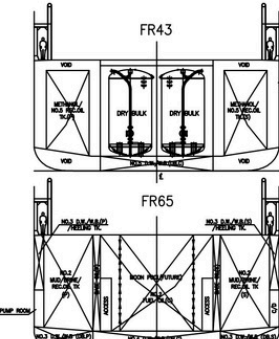
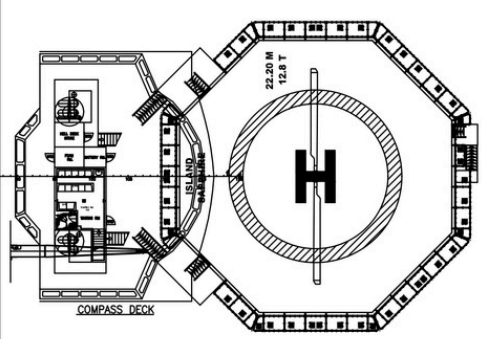
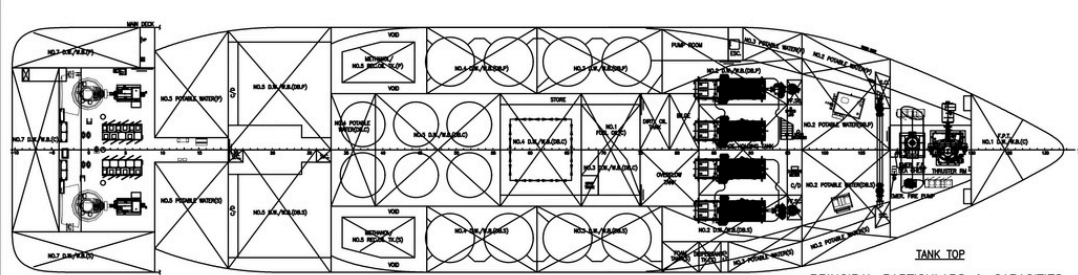
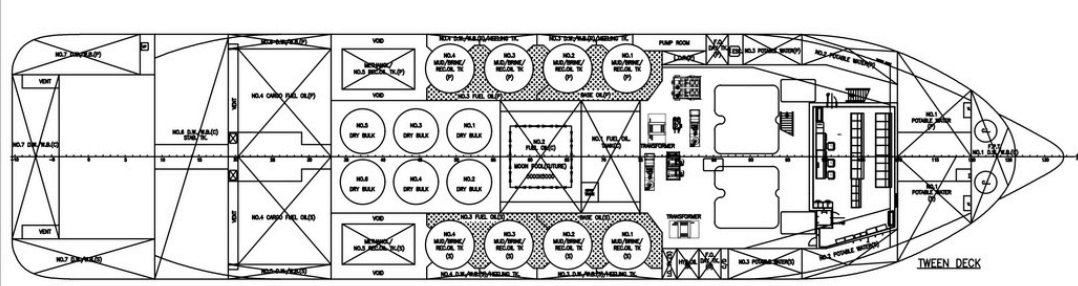
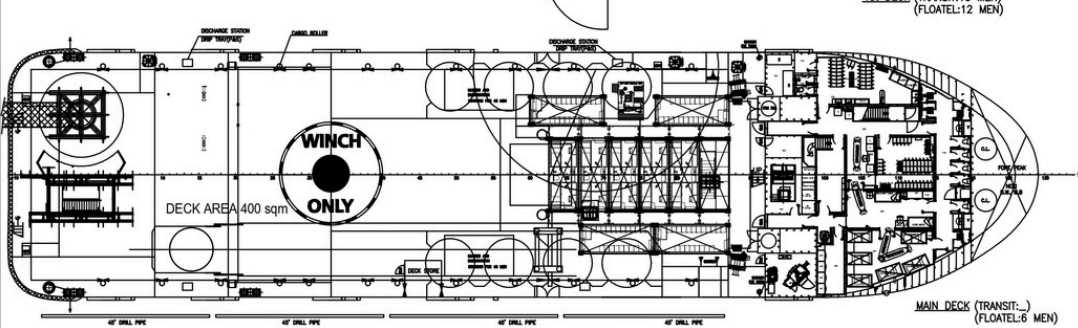
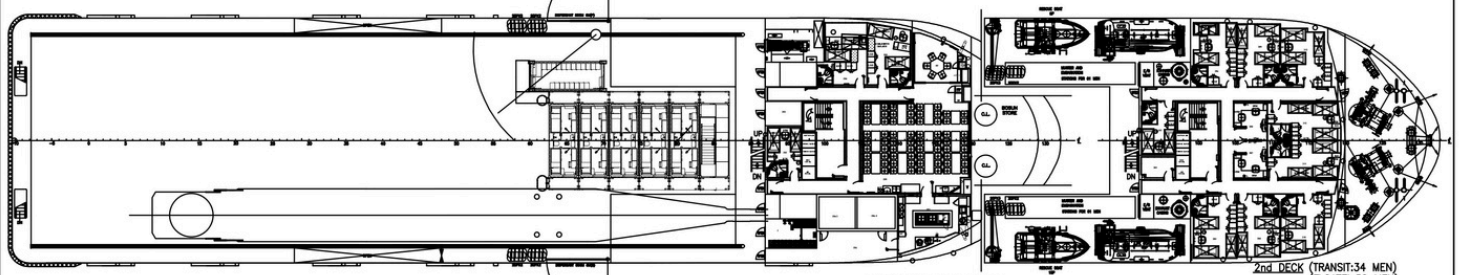
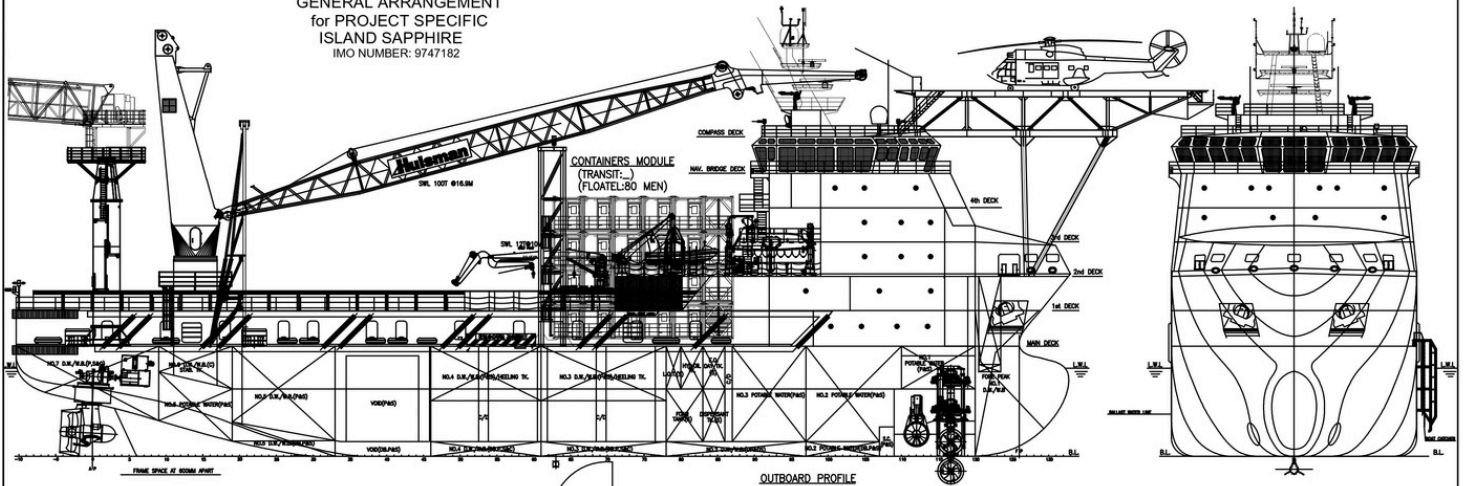
Firemain	Firelines with 2" bronze hydrants
Fireman Outfit	6 complete fireman's outfit to SOLAS requirement (4 sets for FIFI Class 1)
Portable Fire Extinguisher	As per SOLAS Requirement
Fixed CO2 & Flexi-Fog Water	To be installed in Category A Machinery space
Extinguishing System	as per SOLAS and class requirement
Emergency Fire Pump	1 x 70m ³ /hr @ 70m Head
External FiFi 1	2 x front PTO driven Pump @1,880m ³ /hr 2 x Monitor of Water Jet & Water/foam type

Others

Dynamic Positioning System	Kongsberg - K-Pos DP-21 with cJoy Independent Joystick System
Ballast Water Treatment System	Minimum 120m ³ /hr
Sewage Treatment Plant	1 x CKST 40Men or equivalent
Oily Water Separator	1 x HYN 15ppm c/w Alarm or equivalent
Water Maker	2 x SW-30T @40m ³ /day Seawater RO

Helideck	MTOM 9.3 T, D-VALUE 22M
-----------------	-------------------------

GENERAL ARRANGEMENT
for PROJECT SPECIFIC
ISLAND SAPPHIRE
IMO NUMBER: 9747162



PRINCIPAL PARTICULARS & CAPACITIES

LENGTH OA	86.00 M	REC.OIL	1,018 M ³
LENGTH BP	75.60 M	BASE OIL	239 M ³
BEAM MLD.	20.00 M	MUD	781.6 M ³
DEPTH MLD.	9.00 M	BRINE	761.6 M ³
DRAFT DESIGNED	7.20 M	METHANOL	256.6 M ³
DRAFT SCANTLING	7.40 M	D.W./W.B.	2,020 M ³
COMPLEMENT	202 MEN	GENSET	1,800 KW X 4
SHIP FUEL OIL	1,764 M ³	MAIN PROPELLER	2,200 KW X 2
CARGO FUEL OIL	754 M ³	TRIAL SPEED	14.0 KTS
POTABLE WATER	1,001 M ³	DK CARGO AREA	400 M ²
CEMENT TANK	416 M ³	CARGO DK LOAD	7.5 T/M ²

NOTE:
1. THIS DRAWING WAS DERIVED FROM YC3233-001.

CLASS: ABS @ A1, OFFSHORE SUPPORT VESSEL
 OPV1,
 SSP-C1,
 SPS,
 SSR OR C 10/C,
 AMS,
 ACCU,
 SPS-2,
 RW,
 UNLD

A1 REVISED AS PER YARD/CLIENT FEEDBACK		Z/A	16.05.2025
AD ISSUED FOR CLASS SURVEILLANCE		Z/A	WHD 06.05.2025
REV	MODIFICATION	BY	CHK'D DATE
PROJECT 86M DIESEL ELECTRIC PLATFORM SUPPLY / OIL RECOVERY/SAFETY STANDBY VESSEL "ISLAND SAPPHIRE"			
TITLE			
GENERAL ARRANGEMENT			
DRG NO: P8349-101-02-A1		SCALE: NTS	SIZE: A1
DATE: 07.05.25	DRAWN BY: Z/A	CHECKED BY: WAHD	
THIS DOCUMENT AND THE INFORMATION IT CONTAINS IS COPYRIGHT AND REMAINS THE PROPERTY OF SEARCH SOLUTIONS INT'L PTE. LTD. IT IS NOT TO BE COPIED IN WHOLE OR IN PART OR DISCLOSED TO ANY THIRD PARTY FOR ANY PURPOSE WHATSOEVER WITHOUT PRIOR WRITTEN CONSENT.			
OWNER			
MVA INVESTMENTS LIMITED			
BUILDER	GUANGDONG YUEXIN OCEAN ENGINEERING CO. LTD	HULL NO.	YK3233
DESIGNER	SeaTech Solutions International (S) Pte Ltd	PROJECT NO:	P8349
TEL: (65) 62211130		info@seatechsolutions.com	

6 RESULTS

6.1 Case 1

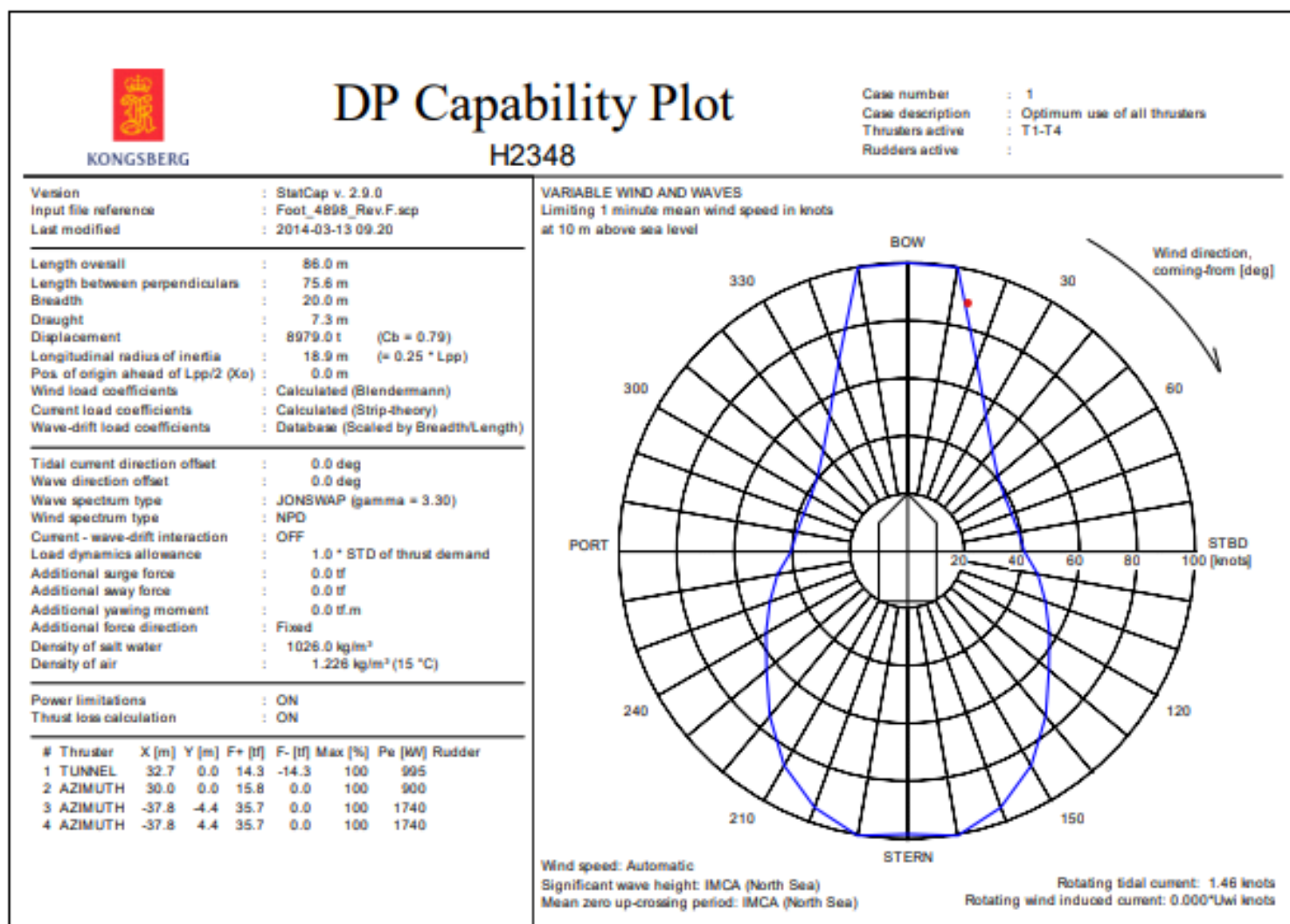


Figure 10: DP capability envelope for case 1.